

# INFECTION TO PROTECTION

## NET FORM NET BLOTCH



Produced by Molly Edmondson  
Hart research intern, 2026

## Early symptoms



Identification of net form net blotch (NFNB) symptoms is key, distinctive symptoms help differentiate from other barley diseases





Symptoms start to appear within 24-48 hours of infection as dark pin-point spots, distinct symptoms develop within 5 days of infection

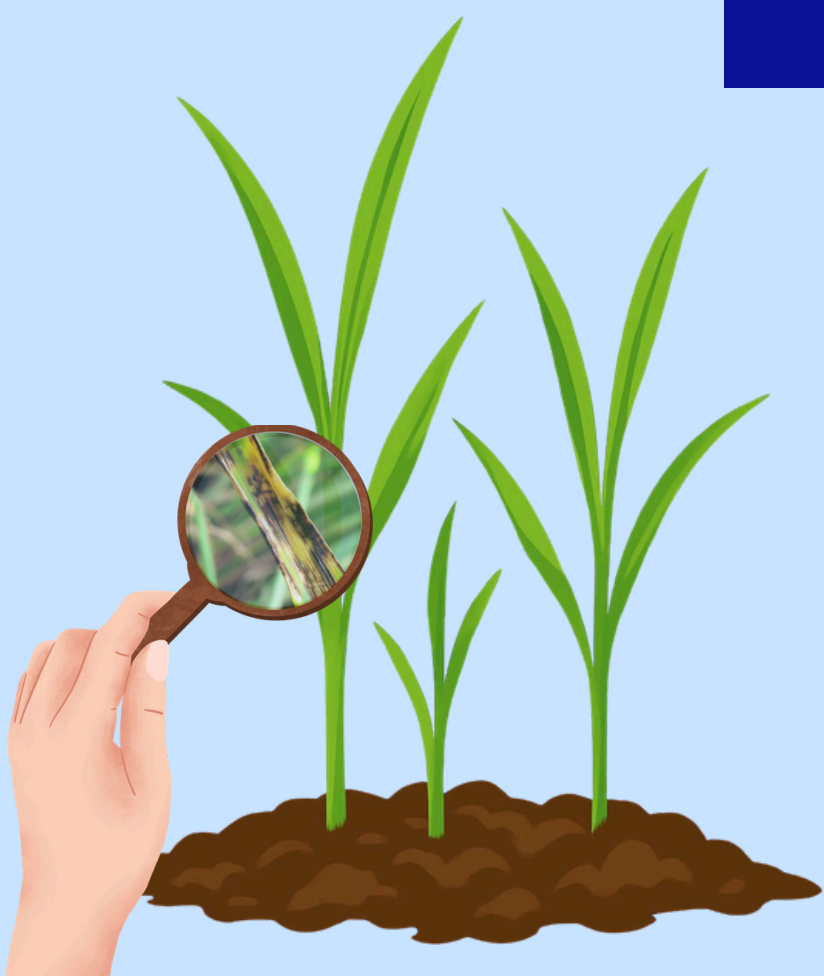


As symptoms develop they form dark brown lines extending across the leaf surface producing a distinctive net-like pattern



## Where to look

-  Symptoms are mainly along the leaf blade, however can affect leaf sheaths and heads
-  Early infections first appear on the lower (older) leaves of the plant
-  Rain splash spreads spores upward and symptoms appear on leaves higher in the canopy
-  Consider high risk areas, focus on paddocks with retained barley stubble or known history of infection



# Monitoring tips

Review previous years disease records to understand NFNB risk in current season



Monitor paddocks regularly, especially when barley or barley stubble was present last year



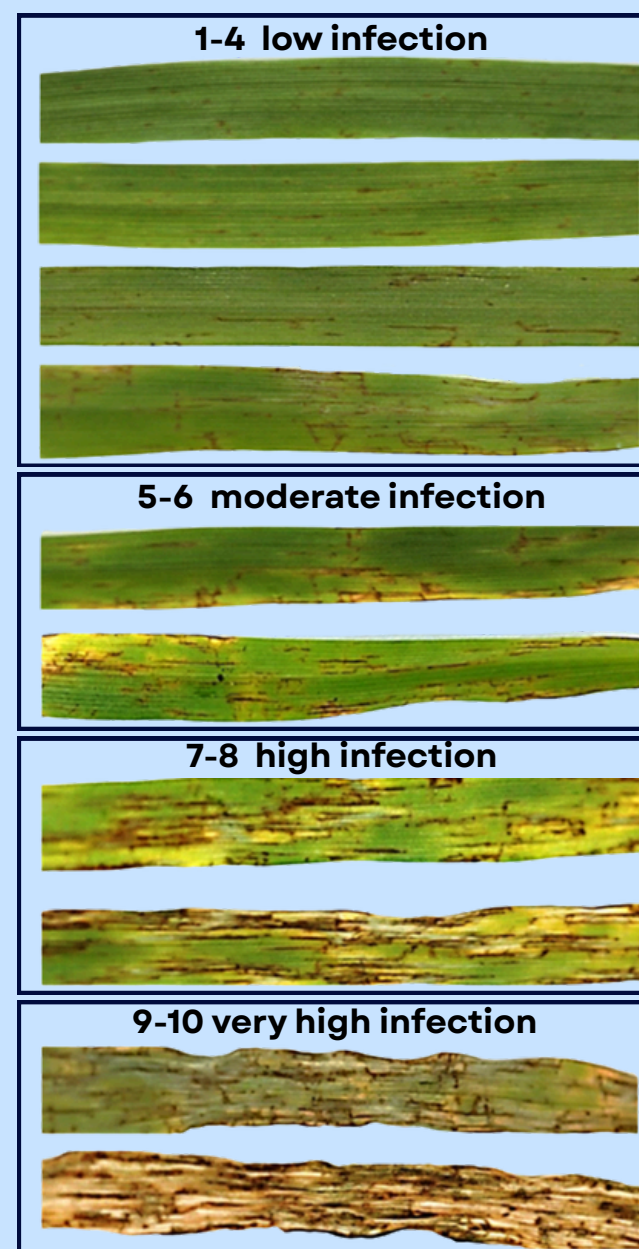
Determine disease incidence and severity by assessing infection at a representative sample (e.g., 50 plants)



Know your variety rating (refer to NVT disease ratings or state cereal disease guides)



Track disease progression throughout the season, particularly before stem elongation and flag leaf emergence



## Why early detection matters

### SPOTTING IT HERE



### ! TO STOP THIS !



Crucial for **mitigating the effects** of NFNB and preventing widespread damage

Limits **progression** of the infection or **secondary infections**

Reduces **high yield losses**

Allows for correct chemical selection preventing the application of **ineffective products** and spread of **resistant strains**

Enables growers to **plan** for next year, managing stubble residues and infected seed carryover



Click here or use the QR code for more info...

